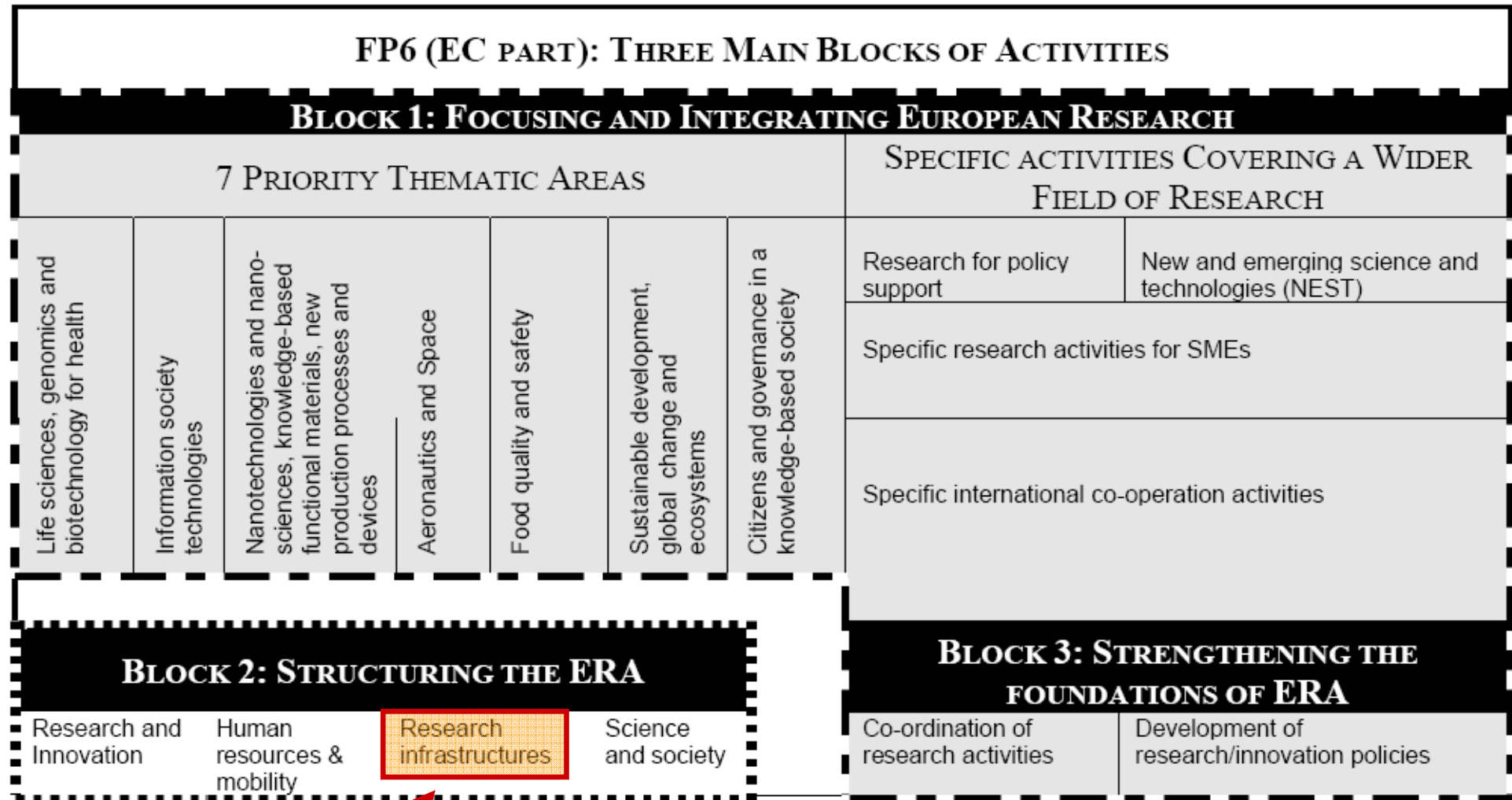




Funded by the European Union

Contract No. FP6-RII3-026155

Schematic overview of the structure of FP6





Funded by the European Union

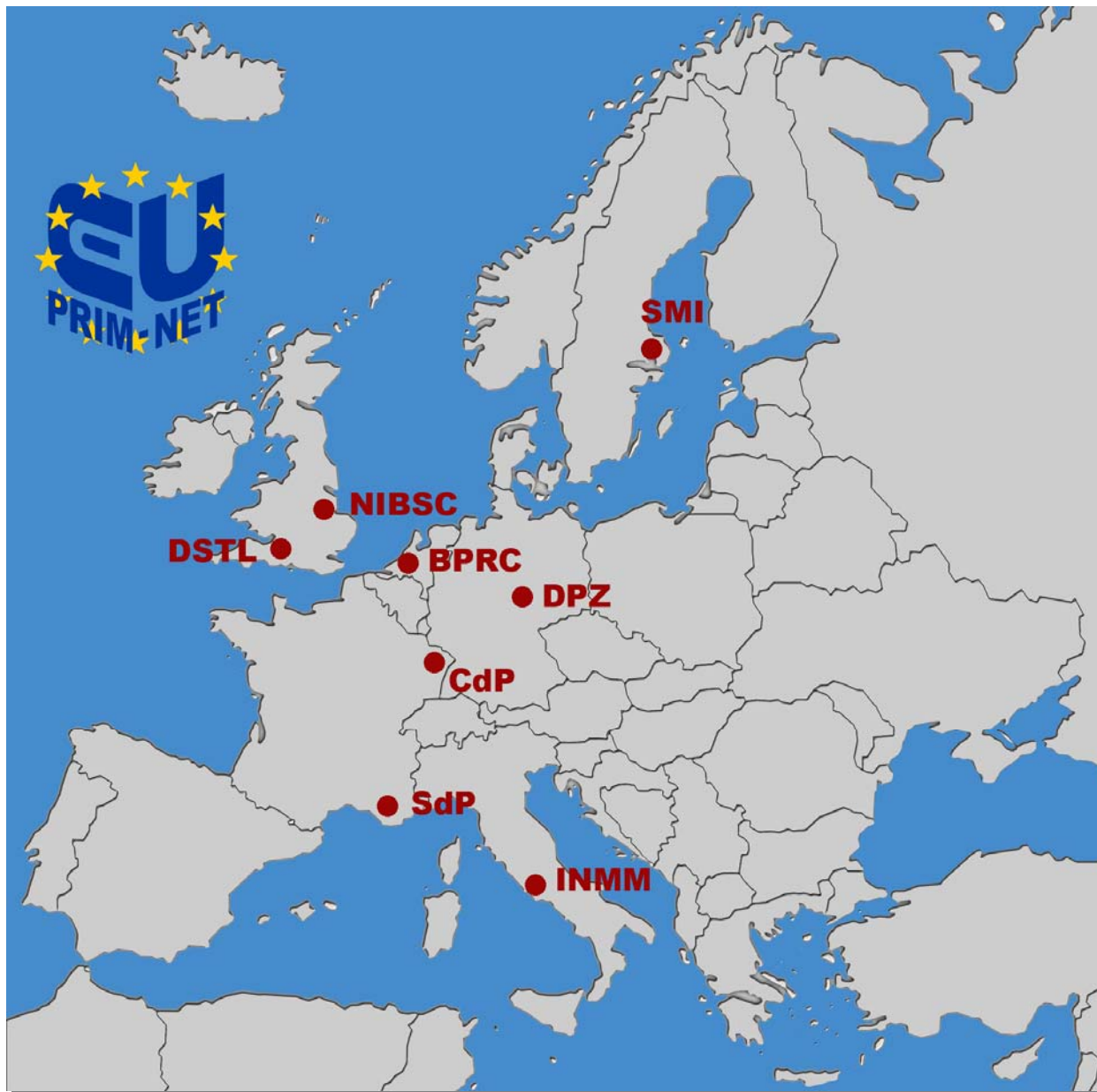
EUPRIM-NET

European Primate Network:

Specialized infrastructures and
procedures for biological and biomedical research

Coordinators: Prof. Dr. S. Treue (DPZ)
Dr. R. Bontrop (BPRC)

- Network of 8 European Primate Centers
- Funded by the European Union
- Duration of the first funding period:
01.04.2006 - 31.03.2010
- Total budget: 4.8 Mio. Euro
- Projects:
 - 3 **Network** Activities
 - 2 **Access** Activities
 - 3 Joint **Research** Activities



DPZ	
BPRC	
SMI	
NIBSC	
DSTL	
INMM	
CdP	
SdP	

- **Annual budget: 13 Mio. € (9 Mio. R&D)**
- **270 Employees (170 R&D)**
- **1.300 Primates (10 species)**
- **Research and service topics:**
 - Primates used as models for complex human diseases
 - Research of highly developed organisms (genetics, reproduction biology, behaviour, evolution and ecology)
 - Primates used as models for complex nervous systems
 - Service: Animal provision, diagnostics, consultation, etc.



- Annual budget: 13.6 Mio. € (11.8 Mio. R&D)
- 123 Employees (106 R&D)
- 1.300 Primates (*macaca mulatta* & *callithrix jacchus*)
- Research and service topics:
 - Virology (AIDS, hepatitis etc.), parasitology (malaria and tuberculosis) & immunobiology
 - Comparative genetics and refinement
 - Animal science department (veterinary sciences, pathology etc)
 - Alternatives (reduction, refinement and replacement of animal research)



BPRC

- **Annual budget: 32 Mio. € (20 Mio. R&D)**
- **301 Employees (203 R&D)**
- **Research and service topics:**
 - Safeguard and enhance public health through standardization and control of biological products used in medicine
 - Operating at the interface between leading edge scientific research, product development, regulation and policy
 - Preparation, storage and distribution of WHO International Standards and Reference Materials
 - Product testing services to ensure compliance with product specifications
 - Experience with models involving cynomolgus and rhesus macaques and tamarins





SMITTSKYDDSSINSTITUTET

Swedish Institute for Infectious Disease Control

- **Annual budget: 31 Mio. € (17 Mio. R&D)**
- **400 Employees (200 R&D)**
- **120 Primates (cynomolgus and rhesus)**
- **Research and service topics:**
 - Biomedical research: HIV vaccine research, tuberculosis, malaria immunology
 - Infectious disease control
 - National reference microbiological laboratory
 - Diagnostic laboratory for special pathogens (BSL 3 and 4)

- **Annual budget: 5 Mio. € (2.4 Mio. R&D)**
- **90 Employees (50 R&D)**
- **145 Primates (3 species)**
- **Research topics:**
 - Molecular mechanisms of cell functions
 - Cell growth factors
 - Molecular determinants of human diseases, both at genetic and biochemical level
 - Non human primate breeding and care for biomedical research
 - Electronic and confocal microscopy



- **Annual budget: 1.2 Mio. € (0.3 Mio. R&D)**
- **15 Employees (5 R&D)**
- **800 Primates (11 species)**
- **Research and service topics:**
 - Breeding & housing of primates for biomedical research
 - Importation and quarantine
 - Biomedical studies for external laboratories
 - Ethology
 - Enrichment and training programs
 - Teaching & training (primates husbandry, welfare, pathology & medical training) for primate users in biomedical research



- Annual budget: 2.5 Mio. €
- 10 Employees (2 R&D)
- 580 Primates (*papio anubis*, *papio papio*, *saimiri sciureus*, *macaca mulatta*)
- Research and service topics:
 - Breeding & housing of primates as a provision of services
 - Reproduction and nutrition research
 - Research on cognitive ethology, biomolecular genetics and anthropology research
 - Biomedical research (malaria, STLV)
 - Cryo-conservation of biological samples
 - Surgery



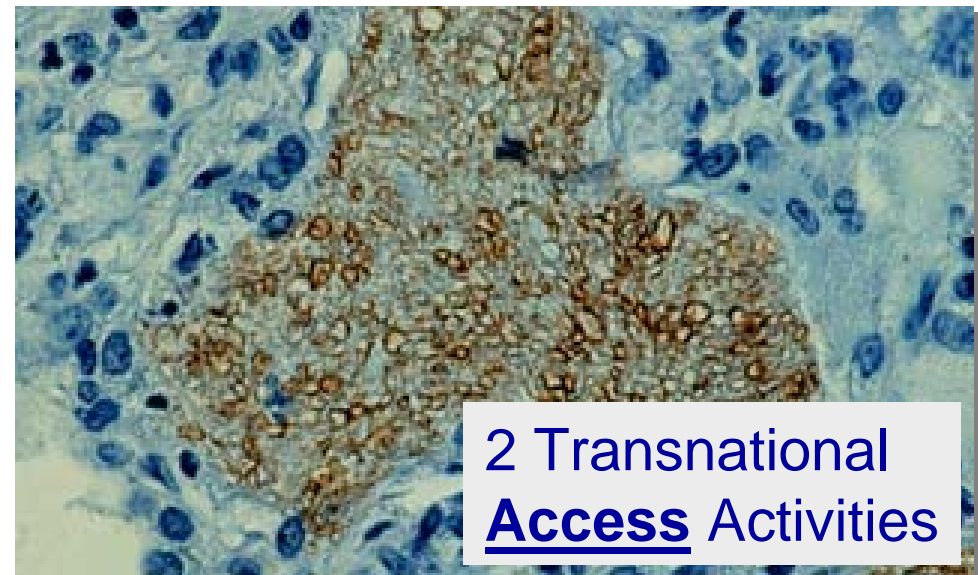


- **Annual budget: 525 Mio. € (268 Mio. R&D)**
- **3.500 Employees (2.100 R&D)**
- **660 Primates (marmosets, rhesus monkeys)**
- **Research and service topics:**
 - Behavioural Pharmacology
 - Immunology
 - Working in high level biocontainment
 - Cross species comparisons
 - Remote monitoring of physiological and electrophysiological indices
 - Training animals to co-operate with procedures

- Optimization of non-human primate keeping and breeding considering **animal welfare** and ethical guidelines
- The **development** and **standardisation** of procedures and methods for the use of non-human primates in biomedical research
- **Availability** of non-human primates of high quality as well as extensive banks of primate material for biomedical research
- **Training courses** for researchers and caretakers working with primates



EUPRIM-Net Projects



- Management
- Organisation and standardisation of primate husbandry, breeding and their use in experiments
- Implementation of positive reinforcement training methods for primates
- Courses on general primate biology and primate husbandry, nutrition and handling



- Primate BioBank

- Tissue, blood and serum bank

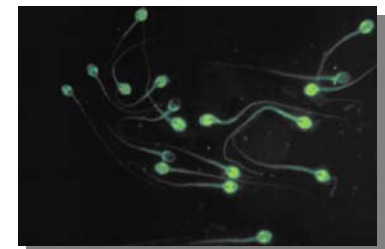
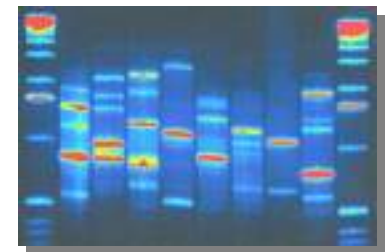
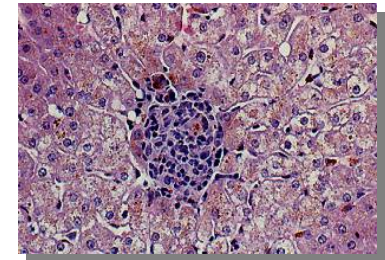
- Comprehensive collection of non-infectious and infectious material of different species

- Gene bank

- Collection consisting of DNA, RNA, cDNA of 170 species

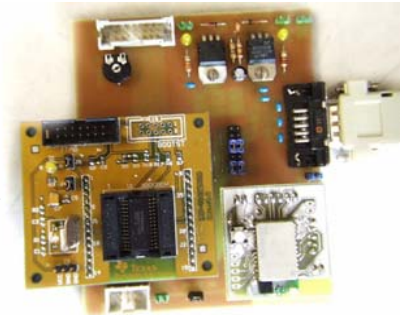
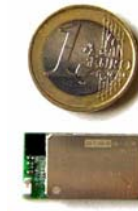
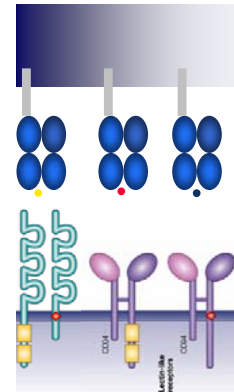
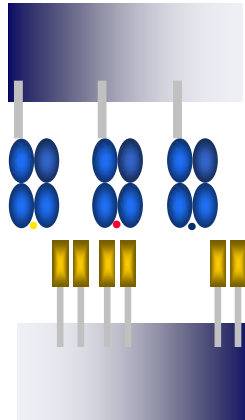
- Gamete bank

- Gametes of marmosets and rhesus monkeys

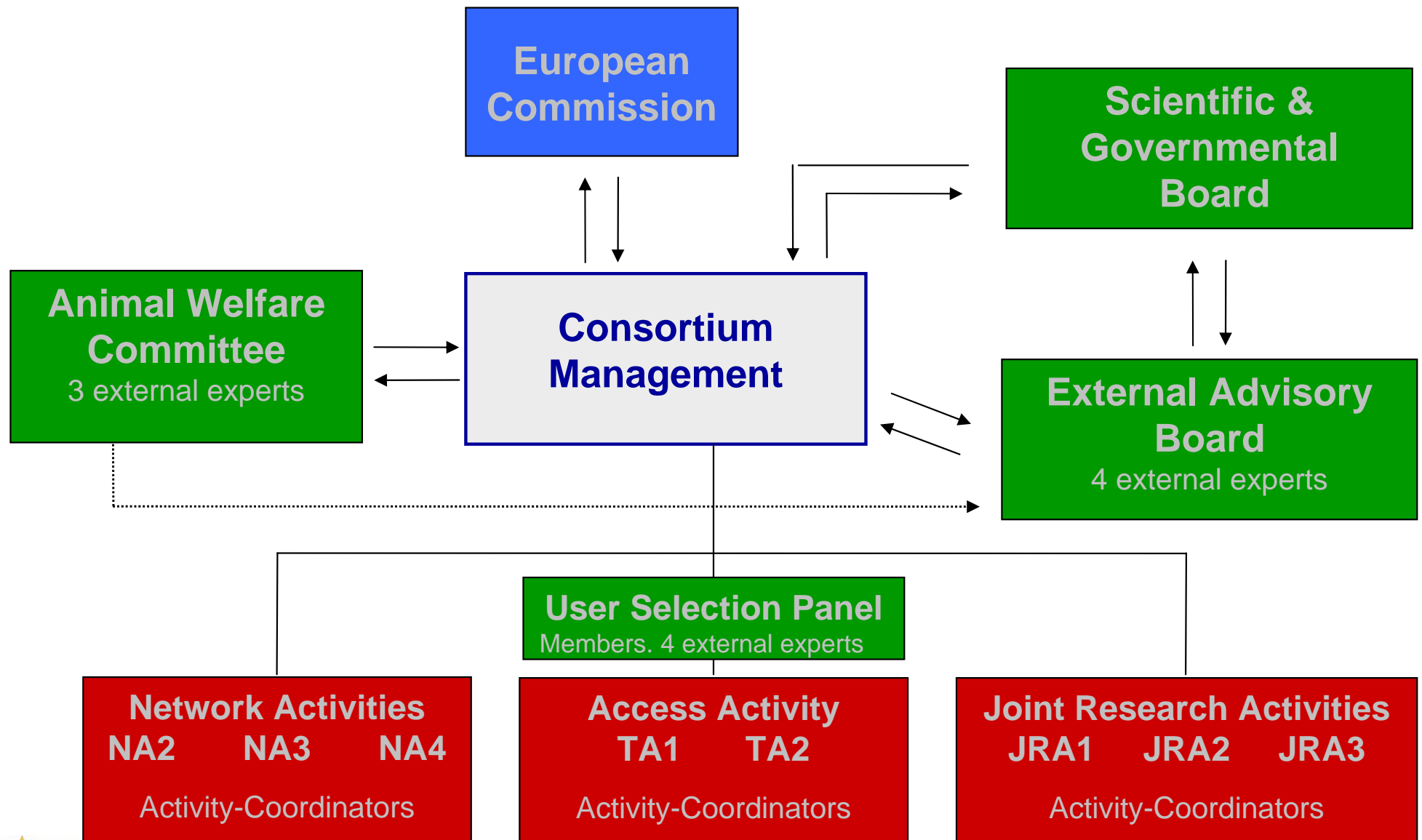


- PRIMOCID

- Non Human **P**rimate **M**odels of **C**hronic **I**mmune **D**isorders



- Development of molecular typing of immune genes in macaques
- Achieving a better defined and improved virus and microbiological state of non-human primates in European research
- Telemetry for distance monitoring and minimal invasive investigation in primate research



- High quality of animal housing and breeding and work with primates in experiments
- Well-educated animal keepers, veterinarians and researchers
- Standardised and comparable procedures/methods
- Availability of non-human primates of high quality
- Contribution to the **3R-concept**:
 - **Refinement** and improvements in animal welfare
 - **Reduction** of the number of animals needed for a given scientific project
 - **Replacement**: banks of biological materials of primate origin

Contact Information:

EUPRIM-NET
Project Management Office
Prof. Stefan Treue
Dr. Ines Lein



euprim @ dpz.eu

German Primate Center - Deutsches Primatenzentrum
Leibniz Institute for Primate Research
Kellnerweg 4
D-37077 Göttingen

www.euprim-net.eu



www.euprim-net.eu